

# ARGUS URETHANE PIGS

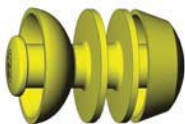
## FEATURES

- Cup and disc style
- Compatible with fiber reinforced line pipe products
- Can be supplied with rare earth magnets for non-intrusive passage indication
- Filming pigs also available (for batch, corrosion inhibition programs)



## » ARGUS LOW FLOW PIGS

- 2 cup design allows for launching at low differential pressures
- Multiple sealing points and maximized length make it ideal for passing through pipeline fittings such as check valves, Y-laterals, and T's
- Flexibility allows for negotiation of the majority of standard radius bends and minor pipeline deformities



NOMINAL PIG SIZE	PIPE WALL THICKNESS		PIG LENGTH		COLOUR	DUROMETER (SHORE 'A')
	in	(mm)	in	(mm)		
2 INCH	.154 - .188	(3.91 - 4.78)	4.50	(114.3)	GREY	60
					YELLOW	70
					BLUE	80
					BLACK	90
3 INCH	.109 - .125	(2.77 - 3.18)	5.75	(146.1)	PURPLE	60
					GREEN	70
					RED	80
	.156 - .188	(3.96 - 4.78)	5.75	(146.1)	ORANGE	90
					GREY	60
					YELLOW	70
4 INCH	.109 - .125	(2.77 - 3.18)	7.50	(190.5)	BLUE	80
					BLACK	90
					PURPLE	60
					GREEN	70
	.156 - .188	(3.96 - 4.78)	7.50	(190.5)	RED	80
					ORANGE	90
					GREY	60
					YELLOW	70
6 INCH	.109 - .125	(2.77 - 3.18)	10.50	(266.7)	BLUE	80
					BLACK	90
					PURPLE	60
					GREEN	70
	.156 - .280	(3.96 - 7.11)	10.50	(266.7)	RED	80
					ORANGE	90
					GREY	60
					YELLOW	70
8 INCH	.250 - .375	(6.35 - 9.53)	14.25	(362.0)	BLUE	80
					BLACK	90
					GREY	60
					YELLOW	70
10 INCH	.250 - .438	(6.35 - 11.13)	17.25	(438.0)	BLUE	80
					BLACK	90
					GREY	60
					YELLOW	70
12 INCH	.250 - .500	(6.35 - 12.70)	20.00	(508.0)	BLUE	80
					BLACK	90
					GREY	60
					YELLOW	70
16 INCH	Consult with Argus for Data and Style					

*Note: Contact Argus for low flow sizes and specifications.*